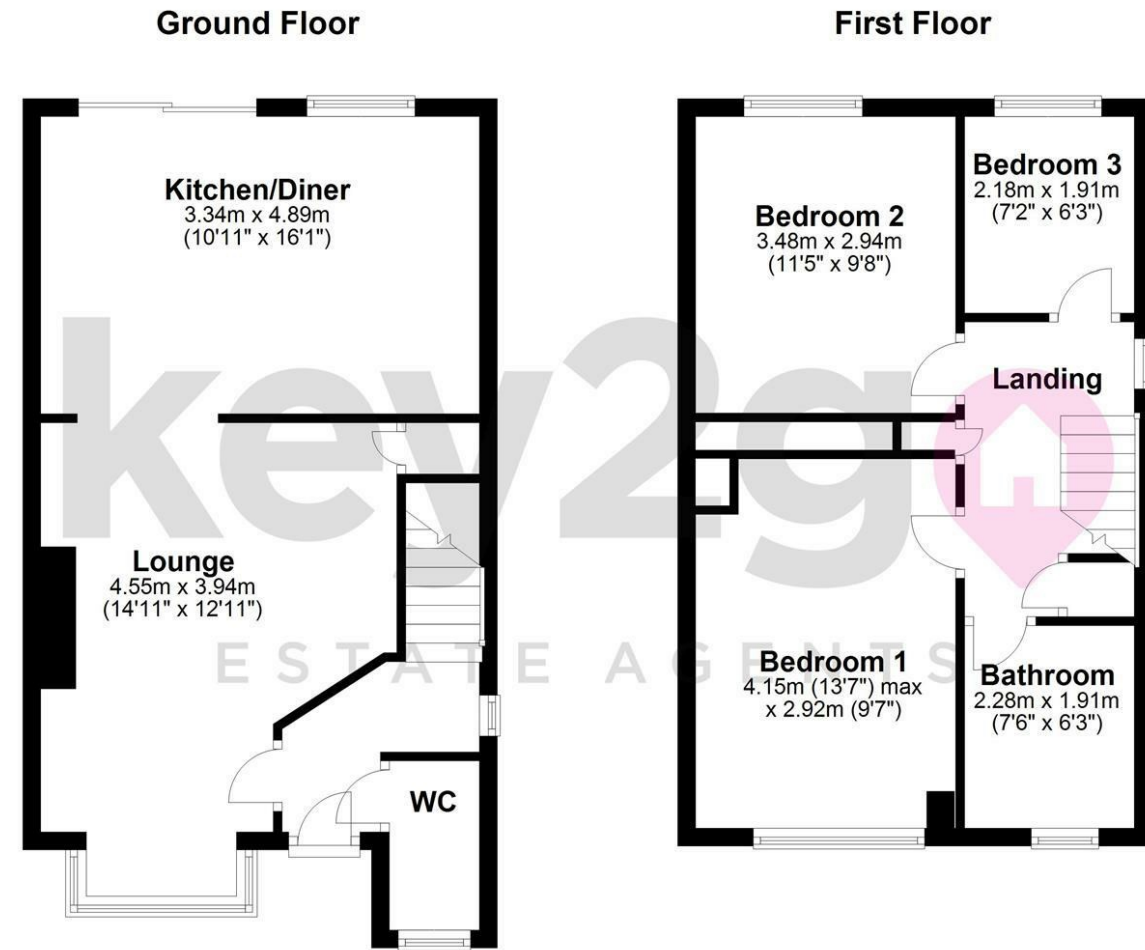
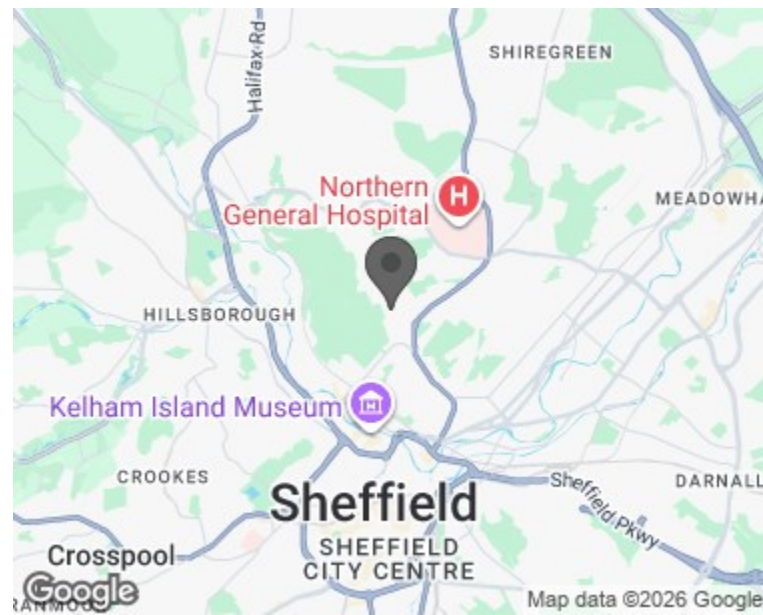


Floorplan

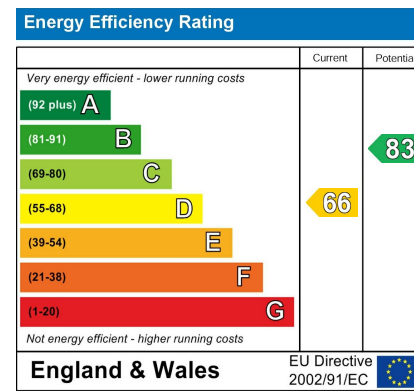


Total area: approx. 81.0 sq. metres (871.9 sq. feet)

Area Map



Energy Efficiency Graph



Viewing

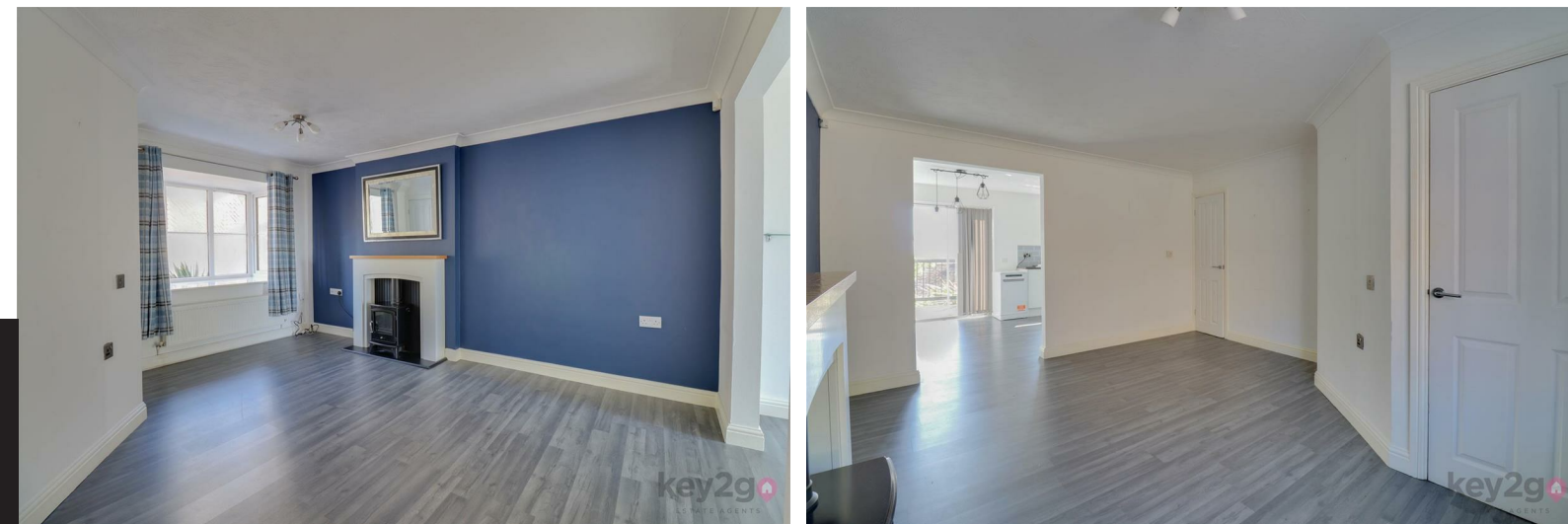
Please contact our Lettings Team Office on 0114 2478819 if you wish to arrange a viewing appointment for this property or require further information.

These particulars, whilst believed to be accurate are set out as a general outline only for guidance and do not constitute any part of an offer or contract. Intending purchasers should not rely on them as statements of representation of fact, but must satisfy themselves by inspection or otherwise as to their accuracy. No person in this firm's employment has the authority to make or give any representation or warranty in respect of the property.



14 High View  
Sheffield, S5 8YE

£1,200 Per Month



# 14 High View

Sheffield, S5 8YE

£1,200 Per Month



A beautifully renovated three-bedroom home, ready to move into now. This stylish property has been finished to a high standard throughout, offering modern interiors, spacious living areas, and a fresh, contemporary feel. Perfect for families or professionals, it combines comfort and practicality in a convenient location. Available immediately – don't miss the opportunity to make this your next home.

PLEASE NOTE THAT THE LOG BURNER IS STRICTLY FOR ORNAMENTAL USE ONLY AND HAS BEEN CAPPED OFF.

A fantastic opportunity to rent this modern three-bedroom semi-detached home, ideally tucked away in a quiet cul-de-sac. Beautifully presented throughout with a stylish high-gloss kitchen, the property also benefits from off-road parking, an enclosed garden with views, and excellent access to the City Centre and M1 motorway. A perfect family home.

